



HABA-BETON
MONOLITHIC IDEAS WWW.HABA-BETON.EU



CONCRETE EXCELLENCE

EXPERTISE AND QUALITY
IN CIVIL ENGINEERING SINCE 1912

HABA-BETON | Johann Bartlechner KG | Langschwert 72 | D-84518 Garching a. d. Alz | Germany
Phone +49/86 34/62 40-0 (Fax -50) | info@haba-beton.eu | www.haba-beton.eu
Images Marcus Lechner, Getty Images **Text** Kathrin Ruf **Translation** Lisa Brüderlin
Concept & Design www.pittner-design.de

The fascination of concrete: Concrete, a mixture of cement, sand and water is one of the oldest building materials known to mankind. It was used more than 10,000 years ago for constructing buildings in the region today known as Turkey. The ancient Romans, too, appreciated and benefited from the properties of concrete which they used for their sewer systems and monumental buildings. Larger-scale industrial use of concrete started in the 19th century.

Ever since the beginning of the twentieth century, HABA-BETON has stood for high-quality, innovative products made from concrete.





HABA-BETON – Concrete Excellence

HABA-BETON stands for expertise and quality in civil engineering and is one of the European market leaders in pipe and chamber systems made from concrete and reinforced concrete. Since 1912, we have been manufacturing our products in Germany and Austria. Since 2014 also in Poland.

HABA-BETON is a family-owned business with a longstanding tradition. However, tradition does not mean we can rest on our laurels. HABA-BETON is an innovative, competent and reliable business which continuously strives to improve and modernise its products and production techniques. After all, only consistent improvement can guarantee a quality level which is able to live up to current requirements and the corresponding EU and national standards.

Pipes, chamber systems, monolithic containers and environmental technology form the core areas of our expertise. Our revolutionary PERFECT system has set new standards in sewage technology. We manufacture our products in the German regions of Bavaria, Baden-Württemberg and Saxony, in Austria as well as in Poland. We also consider it part of our tradition to be a responsible employer for about 400 employees. Over the years, many satisfied customers have placed their trust in HABA-BETON for major, prestigious projects. HABA-BETON products have taken centre stage in the construction or expansion of numerous airports and sewage systems for many major German and European cities. With its committed and motivated staff, HABA-BETON is a reliable partner for engineers, construction companies and the public sector alike.







Always on the cutting edge

HABA-BETON is now being managed by the fourth generation of the Bartlechner family. In particular over the last 40 years, the business has experienced continuous growth. The success of HABA-BETON is largely due to a feel for the market and a continuous effort to further improve products and production techniques.

The management team of
Johann Bartlechner KG: Franz,
Gisela, Anita and Johann
Bartlechner (from left to right)

The history of HABA-BETON started with a small coal shop and a manufacture which produced a single pipe per day. Today, HABA-BETON is one of the European market leaders. This extraordinary development would have been unthinkable without hard work and a feel for the market. In 1967, Gisela Bartlechner and her husband, Johann, took over the business in the third generation. Following her husband's death in an accident in 2002, Gisela Bartlechner now manages the company with her sons, Johann junior and Franz. "It has always been my goal to modernise our operations on a regular basis to ensure that our production is on the cutting edge at all times. We should never sit back and rest on our laurels – there is no need to fear change", she said.

Her son, Johann, has fond memories of growing up in an up-and-coming company: "Even when we were children, my brother Franz and I spent all of our free time in the business, and worked there during the school holidays once we were old enough. To us, it was only natural to follow in our father's footsteps – and he had always been very much committed to his business." Their father, Johann, had not shied away from helping out in the plants when things were busy or when new production lines started. To this day, this close contact with production and the workers in the plants is an integral part of the company's identity.

A German success story

Everything started with a small workshop 100 years ago. Today, HABA-BETON runs eight production facilities in Germany and Austria. Here is a short overview of the company's history:

1912

Mathias Bartlechner, great-great-grandfather of today's company directors Johann and Franz Bartlechner, establishes a coal trading business in the village of Kirchweidach near Altötting in Upper Bavaria, Germany. In addition, he manufactures concrete pipes. It goes without saying that production conditions at the time were much more complicated than today: He could only manufacture one pipe per day and diameter in the wooden formwork he had built specifically for this purpose.

1936

Johann Bartlechner, Mathias Bartlechner's son, establishes the first freight forwarding company in the Altötting region. His business was to become the basis for the company's own vehicle fleet.

1967

Johann Bartlechner and his wife Gisela take over management of the company in the third generation.

1970

Seven employees now work for the business, which has turned into a solid, small enterprise.

1971

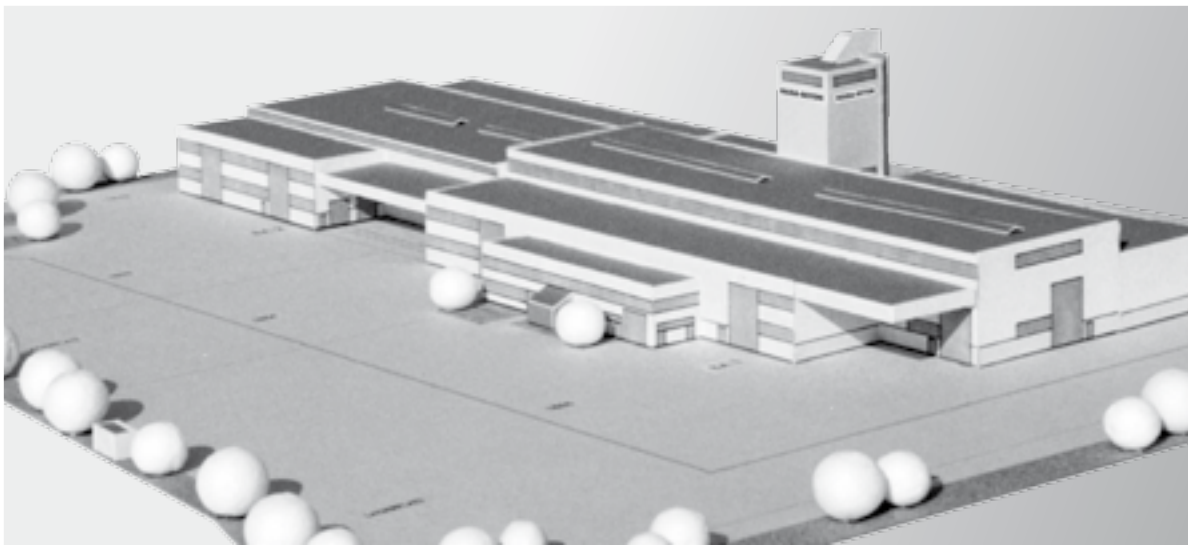
The company takes over the composite paving stones plant in Tüßling.

1982

Johann Bartlechner initiates the construction of a new pipe plant in Garching an der Alz; the plant in Kirchweidach is closed down.

In the past, pipes were placed
in stepped trenches.





1989

The company acquires the gravel plant in Engelsberg to ensure that the HABA production facilities have their own supply of sand and gravel.

1992

The company acquires the pipe plant in Teising.

1993

HABA-BETON has by now turned into a business of respectable size and inaugurates its new pipe plant in Großsteinberg near Leipzig.

1995

The paving stones plant in Tüßling is modernised and converted.

1996/97

Only a few years after they were opened, the production facilities in Großsteinberg near Leipzig are expanded.

1998/99

Johann Bartlechner GmbH & Co. KG, the company's subsidiary in Austria is founded and a new pipe facility opens in Nußdorf ob der Traisen in Lower Austria.

2000

The company takes over the Züblin pipe plant in Türkheim and modernises it.

2001

The company takes over the pipe plant in Aichstetten, Baden-Württemberg.

2002

The longstanding company director, Johann Bartlechner, dies in a tragic car accident. Johann Bartlechner junior takes over management of the business with his mother Gisela and his brother Franz.

2004

The pipe plant in Austria is expanded.

The company founds a subsidiary and a sales office in Poland, which has just joined the European Union.



2005

The pipe plant in Teising is converted and modernised.

2006

Production of chamber base units using the HABA-PERFECT system commences in the Bavarian plants.

2007

The paving stones plant in Tüßling is modernised and expands its output capacity.

2008/2009

The plant in Großsteinberg is expanded and production of chamber base units using the HABA-PERFECT system commences

2009

HABA-BETON takes over Karo Betonelemente GmbH in Kuchl near Salzburg, Austria.

2014

A state-of-the-art production facility for paving stones is built at Türkheim, Germany.

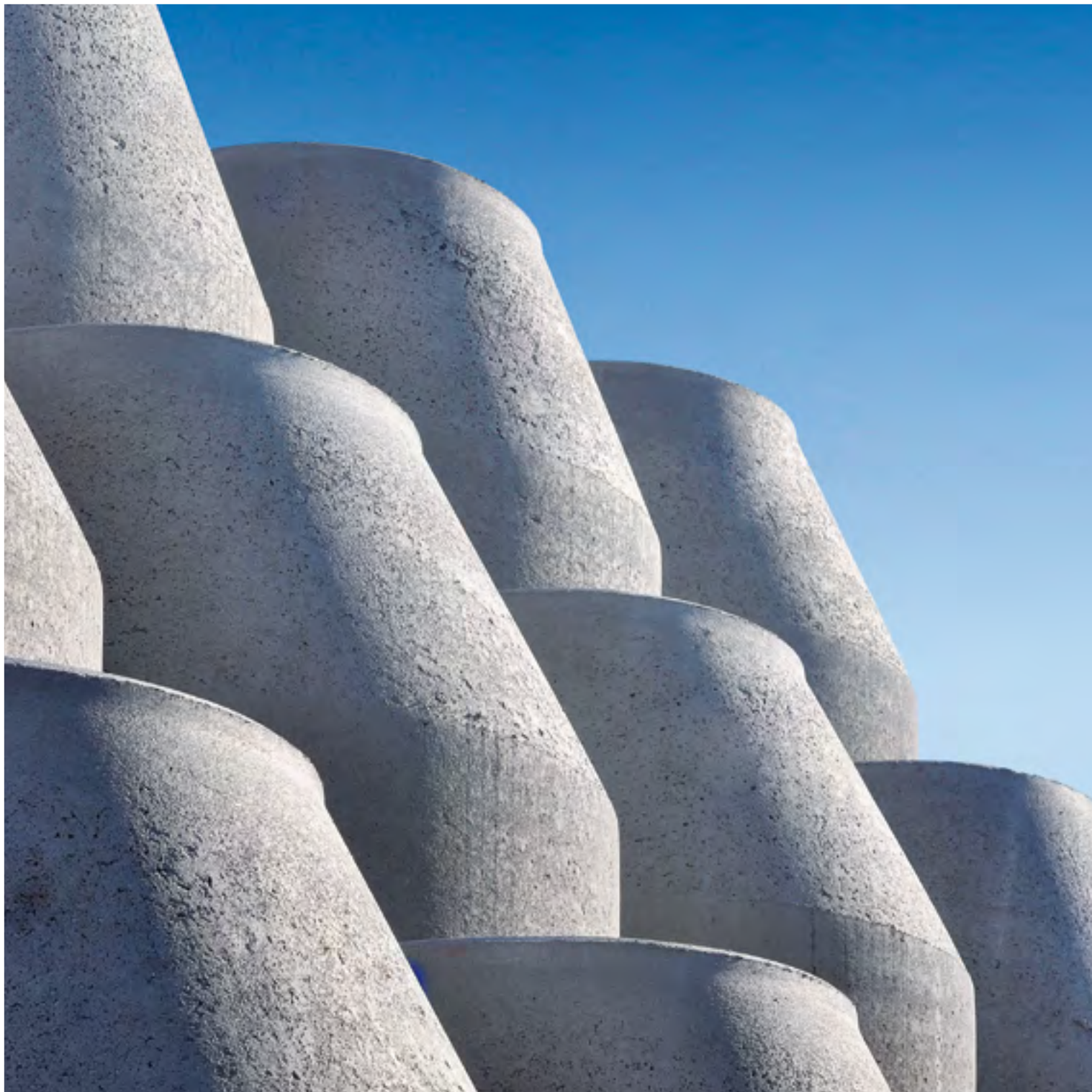
Expansion of the facilities at Ujazd, Poland: production is due to start in 2015.

The company takes over the pipe plant of Gollwitzer GmbH & Co. KG. By now, HABA-BETON employs more than 400 staff.

Left: model for the new building and extension of the Nußdorf plant.

Centre: Johann Bartlechner senior during construction of the Großsteinberg plant.

Right: Aerial view of the Großsteinberg plant in 2009



HABA-BETON – one brand, many purposes

**Pipes, chamber systems,
monolithic containers and
environmental technology
are the four core areas of
the HABA-BETON business.**

Since 1912, we have been manufacturing pipes which are used for draining rain water, surface water and sewage or serve as supply pipes or installation pipes. In the area of environmental technology, we have been producing septic tanks and storm tanks using precast concrete components since 1960. Since 1999, we have also been manufacturing monolithic containers for application as pump chambers as well as flush and venting chambers for water and sewage pressure pipes. At the same time, we started producing reinforced concrete jacking pipes and caisson shaft sinking pipes which can be used for microtunneling. HABA-BETON then specialised in manufacturing chamber base units with the PERFECT system. Our expert development and production staff make sure our high-quality products are always on the cutting edge. And that's a promise. >

17



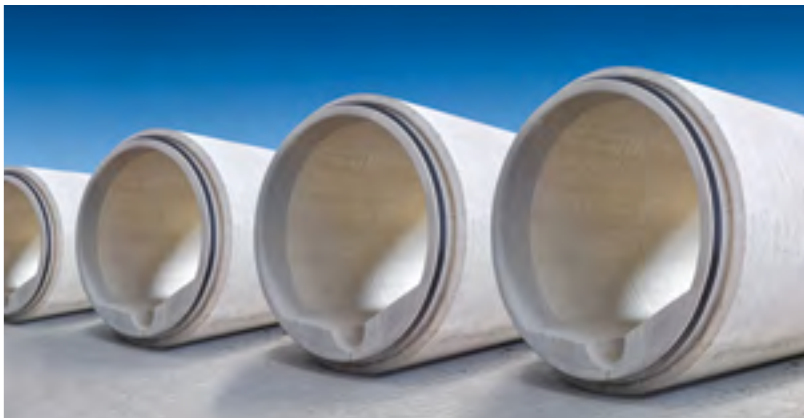
For a comprehensive list of our products, please refer to www.haba-beton.de/produkte

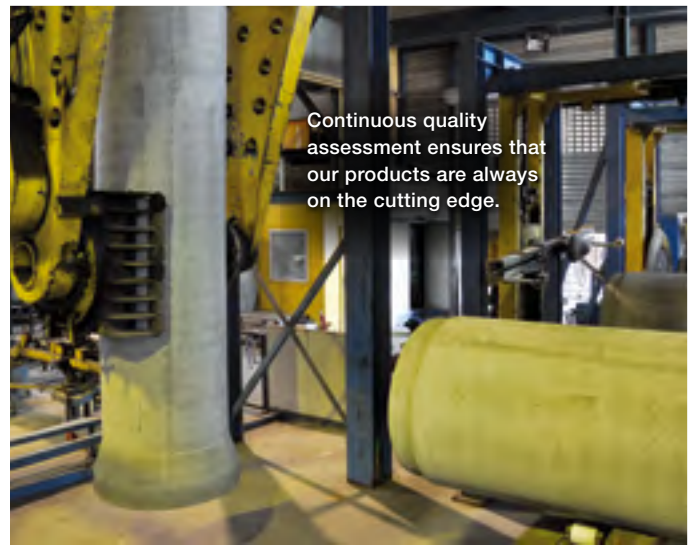


There are many reasons to choose HABA-BETON. We manufacture our pipes in Germany and Austria, using only the finest local and natural raw materials and applying energy-efficient processing methods. Our quality workmanship guarantees durable, solid and non-floating products, which are resistant to solvents, cleaning agents and mineral oils.

18

During production, we take into account the individual application requirements and produce tailor-made pipes of any nominal diameter and length, as well as for any load requirements. In addition, our pipes are available in various geometrical shapes.





Where necessary, a special polyethylene lining will make our pipes more resistant to extreme chemical exposure. Due to our high demands on quality and individual adaptability, HABA-BETON products can be used in a host of different projects.



From airport to city drainage systems – we produce pipes for any purpose.





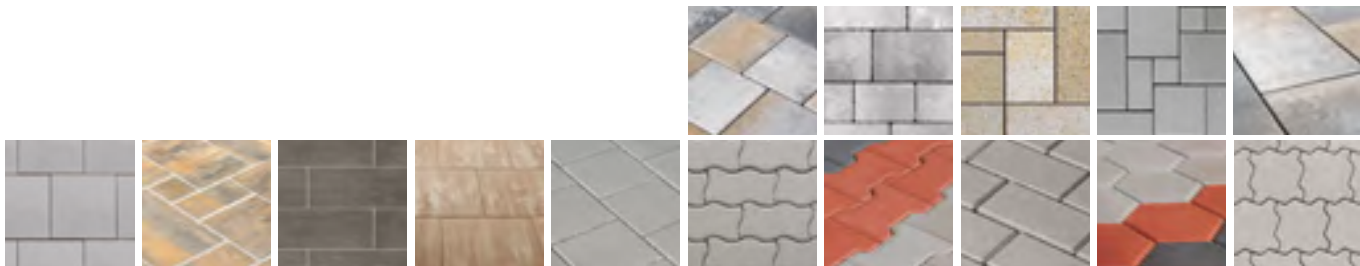




HABA-BETON paving stones

22

In our paving stones plant in Tüßling, we manufacture natural paving stones in two modern production lines. Using only local water, sand, gravel and cement, we create a variety of paving stones, so that you can carve your form and colour ideas in stone. No matter if it's for landscaping, urban development or private use – we offer a multitude of stones from different materials, in various shapes and forms, surface structures and colours to pave your walkways.





HABA-BETON paving stones are available in traditional designs, but also with unusual patterns and colours, which will help you add a personal touch to your project. No matter what you're looking for – you can be sure to find it among the HABA-BETON paving stones. Due to their exceptional quality, you'll find it easy to lay the paving stones, and they are built to last.




For further information on our portfolio of paving stones, please refer to www.haba-pflastersteine.de





Seven days a week, customers can take a look at the entire paving stones portfolio in our 500m² exhibition.

Our PERFECT
chamber systems
are manufactured at
our plants in Teising
and Großsteinberg.



HABA-BETON

PERFECT 



Where to find HABA-BETON: We currently have ten production sites in Europe.

- | | | |
|--|---|---|
| <p>1 D-84518 Garching a. d. Alz
+49/86 34/62 40-0</p> | <p>5 D-92708 Mantel
+49/96 05/9203-0</p> | <p>8 PL-47-143 Ujazd
+48/77/405 69-00</p> |
| <p>2 D-88317 Aichstetten
+49/75 65/94 14-0</p> | <p>6 A-5431 Kuchl
+43/62 45/82 400-0</p> | <p>9 D-84577 Tüßling (Paving production plant)
+49/86 33/50 77-0</p> |
| <p>3 D-04668 Großsteinberg
+49/3 42 93/440-0</p> | <p>7 A-3134 Nußdorf
+43/27 83/41 38</p> | <p>10 D-86842 Türkheim (Paving production plant)
+49/82 45/96 01-0</p> |
| <p>4 D-84576 Teising
+49/86 33/509 64-0</p> | | |

For further information about our sites, please refer to www.haba-beton.eu



www.haba-beton.eu